



■ Features :

- Charger for lead-acid batteries (flooded, Gel and AGM) and li-ion batteries (lithium iron and lithium manganese) (Note.1)
- Universal AC input / Full range
- With USA type 6FT power cord(2pin)
- Class II power (without earth pin)
- No load power consumption <1.0W
- Constant current and voltage(CC,CV mode)
- Suitable for continue load
- For high surge current equipment
- Protections: Short circuit / Overload / Over voltage / Over temp.
- 2 colors LED indicate for charging status
- Fully enclosed plastic case
- High reliability
- Approvals: UL / CUL / EAC / CB / FCC
- 2 years warranty

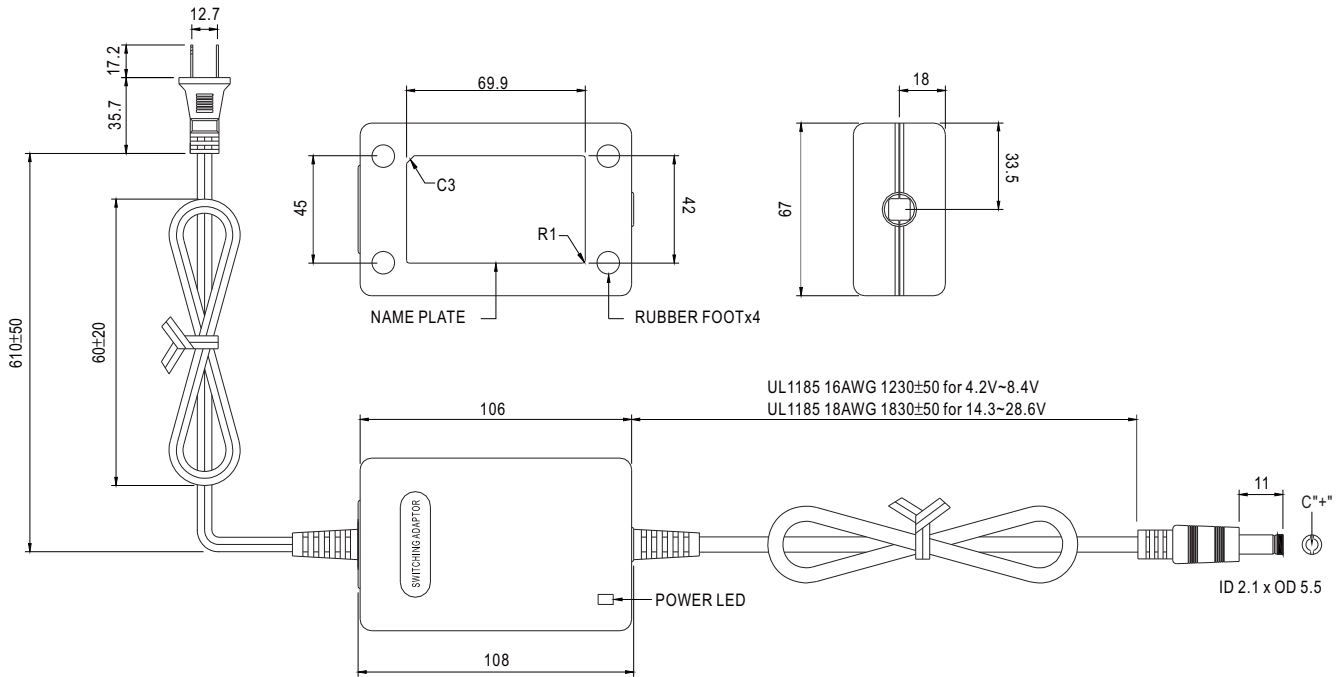


**SPECIFICATION**

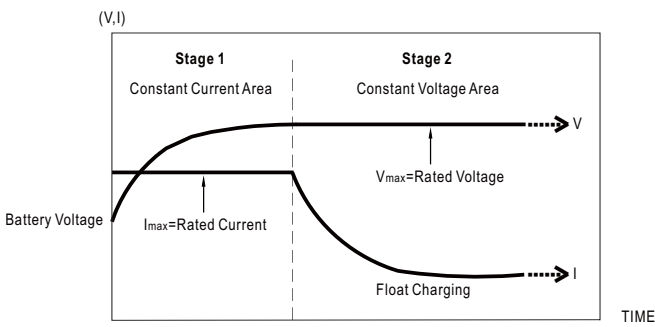
| ORDER NO.    | GC30U-0P1J   | GC30U-1P1J   | GC30U-11P1J | GC30U-2P1J | GC30U-4P1J | GC30U-5P1J   | GC30U-6P1J |              |
|--------------|--|--|-------------|------------|------------|--------------|------------|--------------|
| OUTPUT       | SAFETY MODEL NO.   | GC30U-0  | GC30U-1     | GC30U-11   | GC30U-2    | GC30U-4      | GC30U-5    | GC30U-6      |
|              | DC VOLTAGE SET AT <small>Note.3</small>  | 4.2V   | 5.6V        | 7.2V       | 8.4V       | 14.3V        | 16.8V      | 28.6V        |
|              | RATED CURRENT  | 4A   | 3.99A       | 3A         | 3A         | 2.09A        | 1.6A       | 1.04A        |
|              | CURRENT RANGE  | 0 ~ 4A   | 0 ~ 3.99A   | 0 ~ 3A     | 0 ~ 3A     | 0 ~ 2.09A    | 0 ~ 1.6A   | 0 ~ 1.04A    |
|              | RATED POWER  | 16.8W  | 22.38W      | 21.6W      | 25.2W      | 30W          | 27W        | 30W          |
|              | RIPPLE & NOISE (max.) <small>Note.4</small>  | 50mVp-p  | 50mVp-p     | 80mVp-p    | 80mVp-p    | 100mVp-p     | 100mVp-p   | 150mVp-p     |
|              | CHARGING VOLTAGE RANGE <small>Note.5</small>   | 3.6 ~ 4.4V   | 5 ~ 5.8V    | 6.5 ~ 7.5V | 7.7 ~ 8.6V | 13.5 ~ 14.5V | 16 ~ 17V   | 27.1 ~ 28.8V |
|              | LINE REGULATION <small>Note.6</small>  | ±1.0%  | ±0.5%       | ±0.5%      | ±0.5%      | ±0.5%        | ±0.5%      | ±0.5%        |
|              | LED INDICATOR  | Green LED ON <150 ~ 200mA < Red LED ON   |             |            |            |              |            |              |
|              | SETUP, RISE, HOLD UP TIME  | 200ms, 50ms, 16ms at full load   |             |            |            |              |            |              |
| INPUT        | VOLTAGE RANGE  | 90 ~ 264VAC 127 ~ 370VDC   |             |            |            |              |            |              |
|              | FREQUENCY RANGE  | 47 ~ 63Hz  |             |            |            |              |            |              |
|              | EFFICIENCY (Typ.)  | 55%  | 70%         | 74%        | 76%        | 78%          | 78%        | 80%          |
|              | AC CURRENT   | 1A / 100VAC  |             |            |            |              |            |              |
|              | INRUSH CURRENT (max.)  | 40A / 230VAC   |             |            |            |              |            |              |
|              | LEAKAGE CURRENT(max.)  | 0.25mA / 240VAC  |             |            |            |              |            |              |
| PROTECTION   | OVERLOAD   | 90 ~ 110% Constant current mode and over 300% pulsing mode<br>Protection type : Constant current limiting, recovers automatically after fault condition is removed |             |            |            |              |            |              |
|              | OVER VOLTAGE   | 110 ~ 135% rated output voltage<br>Protection type : Clamp by zener diode  |             |            |            |              |            |              |
|              | OVER TEMPERATURE   | IC1Tj130°C<br>Protection type : Shut down o/p voltage, recovers automatically after temperature goes down  |             |            |            |              |            |              |
| ENVIRONMENT  | WORKING TEMP.  | 0 ~ +50°C (Refer to "Derating Curve")  |             |            |            |              |            |              |
|              | WORKING HUMIDITY   | 20% ~ 90% RH non-condensing  |             |            |            |              |            |              |
|              | STORAGE TEMP., HUMIDITY  | -20 ~ +85°C, 10 ~ 95% RH   |             |            |            |              |            |              |
|              | TEMP. COEFFICIENT  | ±0.03% / °C (0 ~ 50°C)   |             |            |            |              |            |              |
|              | VIBRATION  | 10 ~ 500Hz, 2G 10min./1cycle, period for 60min. each along X, Y, Z axes  |             |            |            |              |            |              |
| SAFETY & EMC | SAFETY STANDARDS   | UL60950-1, CSA22.2, EAC TP TC 004 approved   |             |            |            |              |            |              |
|              | WITHSTAND VOLTAGE  | I/P-O/P:3KVAC  |             |            |            |              |            |              |
|              | ISOLATION RESISTANCE   | I/P-O/P:100M Ohms / 500VDC / 25°C / 70% RH   |             |            |            |              |            |              |
|              | EMC EMISSION   | Compliance to FCC part 15 Class B, EAC TP TC 020   |             |            |            |              |            |              |
|              | EMC IMMUNITY   | Compliance to EAC TP TC 020  |             |            |            |              |            |              |
| OTHERS       | DIMENSION  | 108*67*36mm (L*W*H)  |             |            |            |              |            |              |
|              | PACKING  | 405g; 36pcs / 16.5kg / CARTON  |             |            |            |              |            |              |
| CONNECTOR    | PLUG   | Standard type P1J: 2.1φ * 5.5φ * 11mm, tuning fork type center positive for stock ; Other type available by customer requested                                     |             |            |            |              |            |              |
|              | CABLE  | Standard type 18Awg UL1185 6ft and 4ft for 4.2V~8.4V output only for stock ; Other type available by customer requested  |             |            |            |              |            |              |
| NOTE         | <p>1.Modification for charger specification may be required for different battery specification. Please contact battery vendor and MEAN WELL for details.</p> <p>2.All parameters are specified at 115VAC input, rated load, 25°C 70% RH ambient.</p> <p>3.DC voltage: The output voltage set at point measure by plug terminal &amp; 0% load.</p> <p>4.Ripple &amp; noise are measured at 20MHz by using a 12" twisted pair terminated with a 0.1uf &amp; 47uf capacitor.</p> <p>5.Output charging voltage range is measured from 0% to 100% rated load.</p> <p>6.Line regulation is measured from low line to high line at rated load.</p> |  |             |            |            |              |            |              |

**Mechanical Specification**

Unit:mm



**Charging Curve**



Suitable for lead-acid batteries (flooded, Gel and AGM) and Li-ion batteries (lithium iron and lithium manganese)

**LED Display**

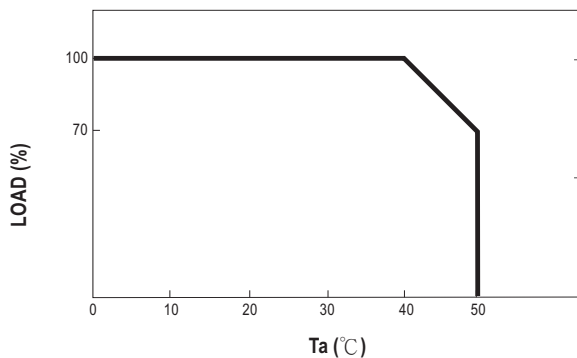
| LED Status | Load Condition |
|------------|----------------|
| Red        | Charging       |
| Green      | Float Charging |

**Plug Assignment**

Standard plug: P1J (option)

| P1J    |        |
|--------|--------|
| P/N    | OUTPUT |
| CENTER | +      |

**Derating Curve**



**Static Characteristics**

