



■ Feature

- Powered by high output 5050 LED.
- Constant voltage.
- Clear 160° optic lens.
- 20 pcs per string.
- CE, RoHS, UL, TUV, BIS, CB and LM-80 certified.

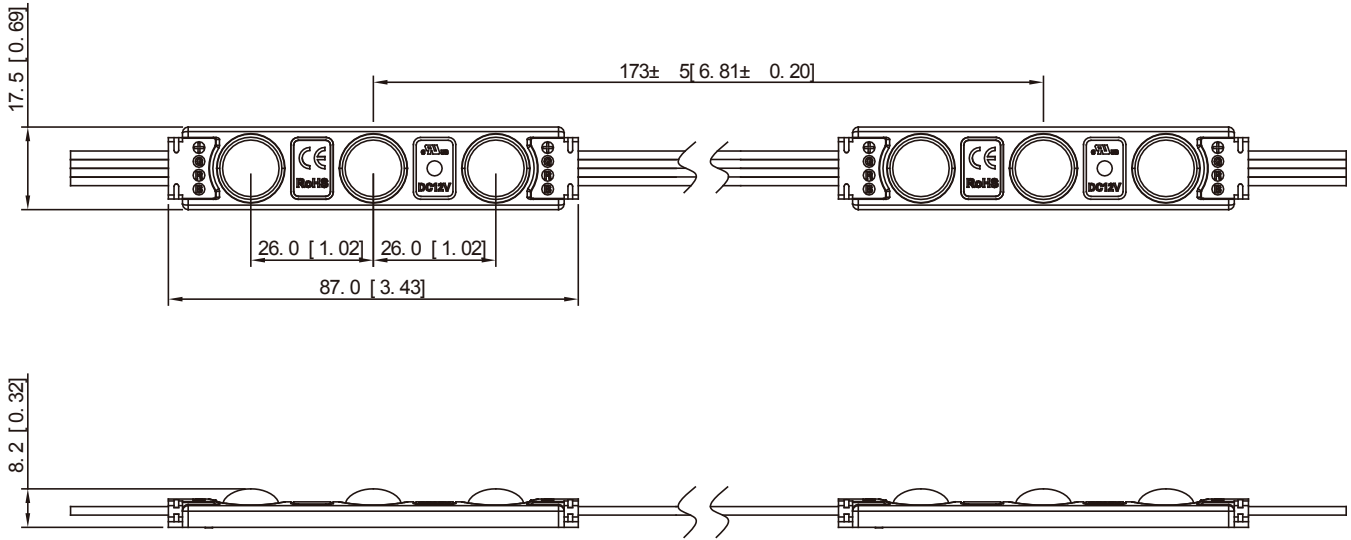
■ Application

- Apply to 8-20 cm depth signs at airports, metros, banks, buildings and shopping malls, etc.

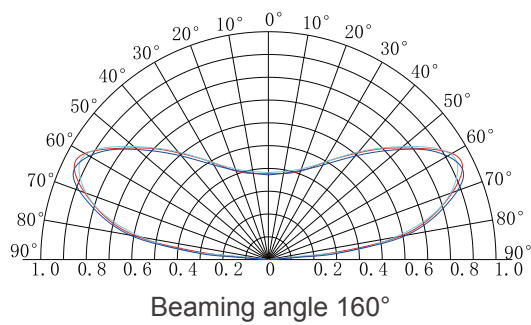
■ Parameters

Items	Parameters
Part Number	EV-BLCF03LBY-RGB
CCT (K)	RGB
Beaming Angle (°)	160°
CRI (Ra)	≥75
Luminous Flux (lm)	R6 G22 B5
Voltage (V)	DC12
Power (W)	0.65
Driving Method	Constant Voltage
Dimension (mm)	87*17.5*8.4
Working Tem. (°C)	-25 ~ +60
Storage Tem. (°C)	-25 ~ +70
Protection Grade	IP65

■ Dimension (Unit:mm/inch)



■ Beaming Angle

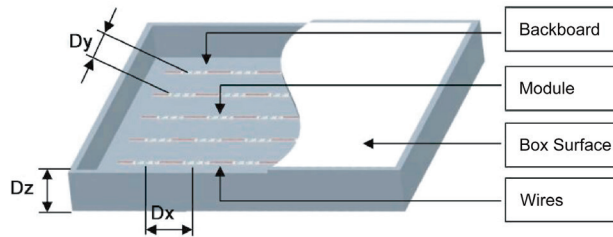


Reference Scheme

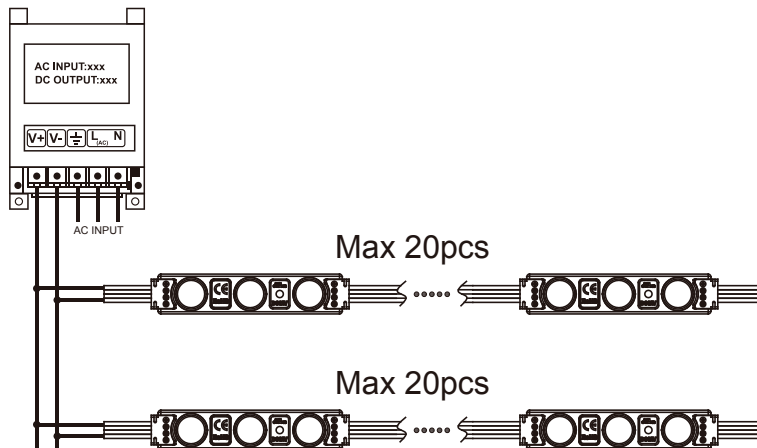
Part Number	Depth(mm)	Distance(mm)	Density(pcs/m ²)	Illumination(lux)
EV-BLCF03LBY-RGB	Dz=65	Dx=100 Dy=50	52	4100-5400
	Dz=90	Dx=120 Dy=70	37	2900-4500
	Dz=100	Dx=130 Dy=80	29	2800-3600
	Dz=130	Dx=140 Dy=90	19	1900-2400
	Dz=180	Dx=140 Dy=90	18	1800-2200

Remark:

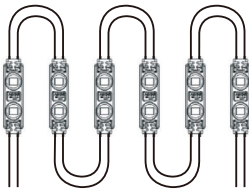
01. The acrylic plate in the case is 3mm thickness, and the light transmittance is 54.4%.
02. The illumination above is the minimum data when evenly lighted.
03. The above data is for reference only.



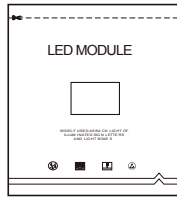
Wire Connection



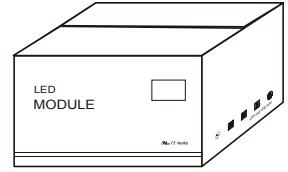
■ **Packing**



20pcs per string



100pcs in an anti-static bag



1000pcs per carton

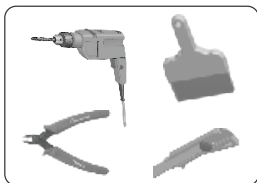
■ **Packing Specification**

- Antistatic bag adopted
- Packing information

Part Number	EV-BLCF03LBY-RGB
Carton Dimension (mm)	490*450*220
Bags Per Carton	10
Quantity Per Carton (pcs)	1000
Net Weight (kg)	15(1±10%)
Gross Weight (kg)	16.1(1±10%)

Due to the packing manner difference, please adhere to the original products in case of discrepancy found between the picture and actual product.

■ **Self-provided tools & material**



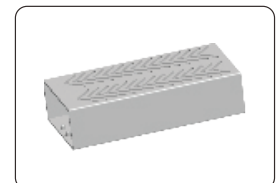
Dust brush, cutter, pencil, wire stripper, and drill



Wire Connector (Standard)

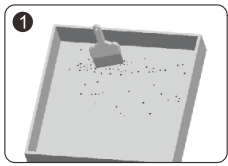


Screw

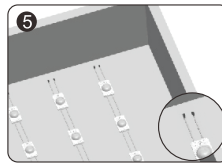


Power Supply

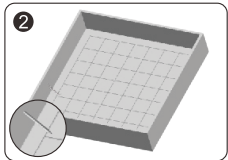
■ Installation Guidance



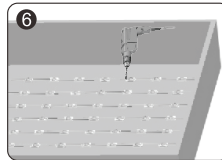
- Clean inside the light box.



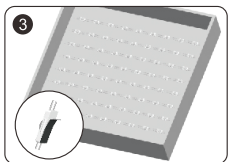
- Strip the end wire for 10mm and cap with the wire connector. Waterproof and anti-corrosion must be done on the connectors.



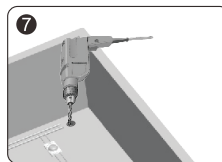
- Determine the appropriate layout.



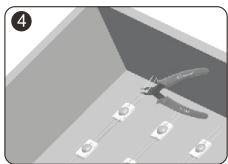
- Locate modules in the optimal position and secure with screws or neutral glass cement, which should be applied at the edge of the modules.
- ⚠ Note: Avoid breaking the module and wire when fixing with a drill.



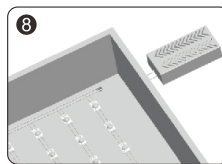
- Peel tape backing and stick modules into place.



- Drill a hole for connecting power cable. Fixation and protection for the cable must be done on the hole.
- ⚠ Note: Avoid breaking the light box in drilling the hole.



- Remove the unneeded modules.
- ⚠ Note: Cut in the middle position of the wires between modules.



- Connect to the power cable and make sure that the polarity for connection is correct.
- ⚠ Note: Red wire is positive and black wire is negative.

■ Instructions

01. Disassembling or modifying the product is not allowed.
02. Installation with power on is not allowed.
03. Any organic solvent chemical is not allowed.
04. Acidic or alkaline adhesive is not allowed. when install, neutral glass cement could be used for installation purpose, make it drying in open environment for four hours.
05. Isolation and corrosion prevention on all wiring points and wire ends.
06. Make sure the power wire is thick enough and ensure the voltage and connections are connected correctly before power on.
07. This product should be used in a sign, do not expose it in opening site.
08. Installation, maintaining should be done by professional staff.
09. 20 pcs in a serial connection maximum.
10. The power wire between power supply and module should be less than two meters to keep the same brightness on all parts.
11. Initial location with 3M tape, then secure with screws.

■ Declaration

01. Warranty: 3 years.
02. In order to ensure the safety, the broken wires need to be replaced by the manufacturer or the service agent, or by the staff with the similar qualification.
03. The given data in the specification was based on the laboratory testing, there may be discrepancy found in the actual products.
04. The given drawings in the specification are only for reference, there may be discrepancy found in the actual products.
05. The products are subject to change without prior notification.